

DP II M/V Kimberly Candies



Offices

375 Hwy. 182
Bayou Vista, LA 70380

9301 Largo Drive West
Largo, MD 20774

7171 Hwy. 6 North, Suite 210
Houston, TX 77095

5409 Beamon Road, Suite B
Norfolk, VA 23513

444 W. 8th Street
National City, CA 91950-1002

99-1221 Halawa Valley St., Suite B
Aiea, HI 96701

Point of Contact

Gary "Gibby" Gibbs
ggibbs@phnx-international.com
Office: 800.648.1457
Fax: 985.399.0604
Mobile: 985.518.2337

REGISTRATION

Official No. 1133134
Port New Orleans, LA
Builder/Year Bender Ship Building & Repair Co., 2002

DESCRIPTION

L.O.A. 240 ft
Beam Molded 54 ft
Depth to Main Deck 20 ft
Cargo Deck 170 ft x 45 ft
DWT Tonnage 3000 LT
Gross Tonnage 2068
Maximum Speed 12.5 knots
Draft 16 ft

CLASSIFICATION

ABS +A1 Supply Vessel, +AMS, Circle E, DP-2, Loadline

REGULATORY

USCG Subch. L, Full Ocean SOLAS, IMO A469

CAPACITIES

Total Fuel Oil 221,000 gallons
Fresh Water for Ship 38,950 gallons
Fresh Water Ballast 284,000 gallons
Sea Water Ballast 27,350 gallons
Main Crane 40 T @ 20 ft.

MACHINERY

Main Engines (4) 3512, 1360 KW each - Caterpillar
Z-Drive Units (2) Kamewa Aquamaster 2001
Bow Thruster (2) Kamewa 900 HP CPP Tunnel Thrusters
Emergency Generator (1) CAT, 95 KW

ELECTRONICS

Per Regulatory Body & Customer Requirements.

NAVIGATION / POSITIONING*

Surface DGPS, Fully redundant, ≤ 1 meter accuracy
FanBeam equivalent laser positioning system
Subsea Navigation USBL

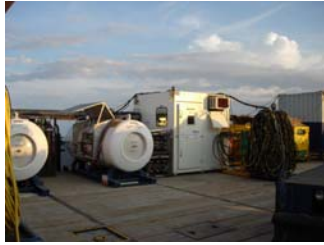
ACCOMMODATIONS

36 Personnel

* Registered professional Surveyors are available who are licensed in Louisiana & Texas



Onboard Equipment



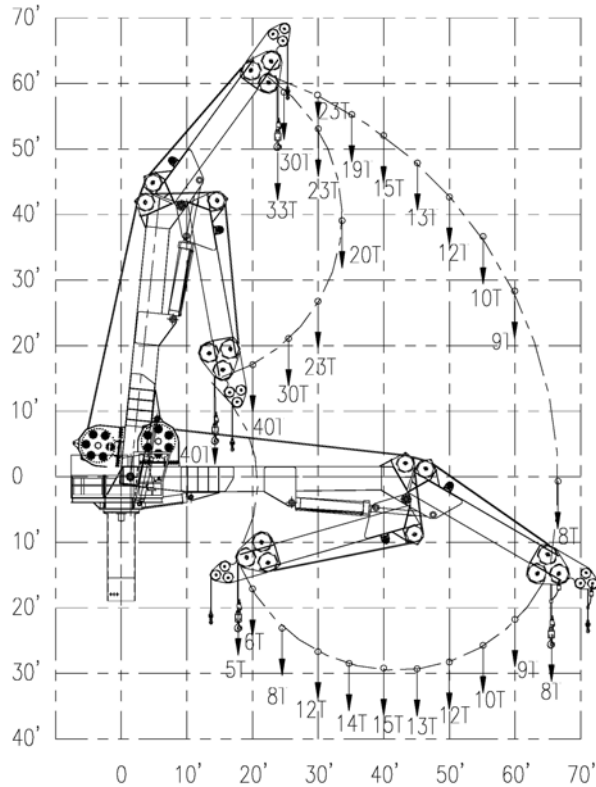
Surface Mixed Gas Spread
300 fsw



Atmospheric Diving System
1,200 fsw



Remotely Operated Vehicle
20,000 fsw



Static / Dynamic Load Chart
40-Ton Knuckle Boom Crane



Onboard Spreads Supporting Manned and Unmanned
Inspection, Maintenance, and Repair Services